

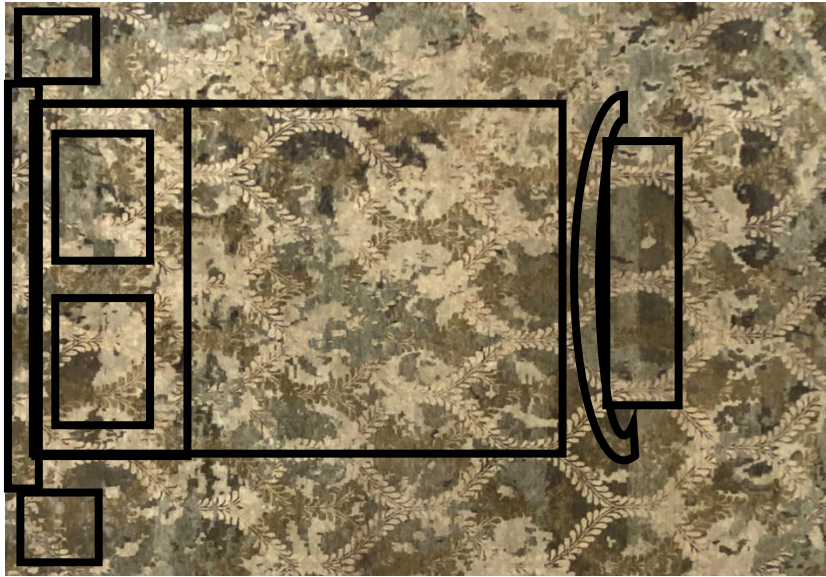
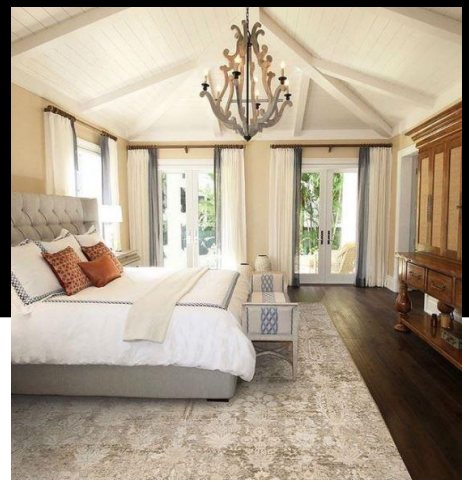
Atiyeh Bros.[®]
SINCE 1900

RUG SIZE GUIDE



ATIYEH BROS. | 6750 SW BONITA RD, TIGARD, OR 97224 | ATIYEBROS.COM

Bedroom Rugs sizes & shapes

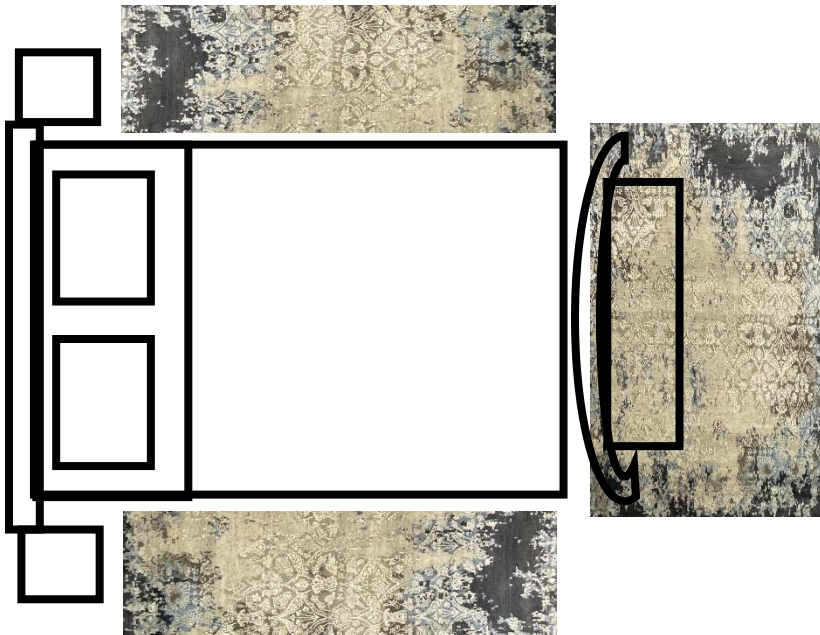


10 ft x 14 ft – 12 ft x 15 ft

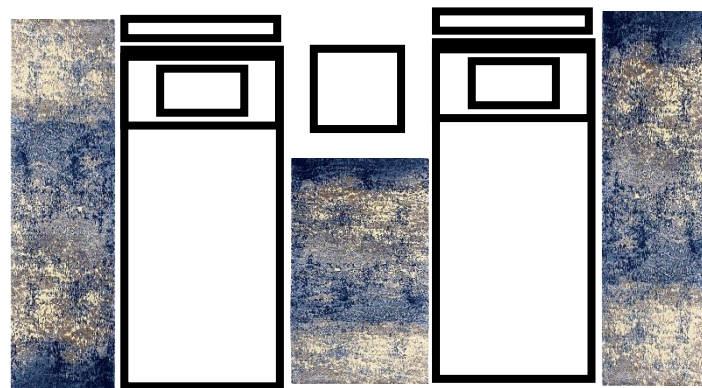
Allow for at least 18 in. on all sides of the bed to step onto.



8 ft x 10 ft – 9 ft x 12 ft



5 ft x 8 ft – 6 ft x 9 ft & Runners

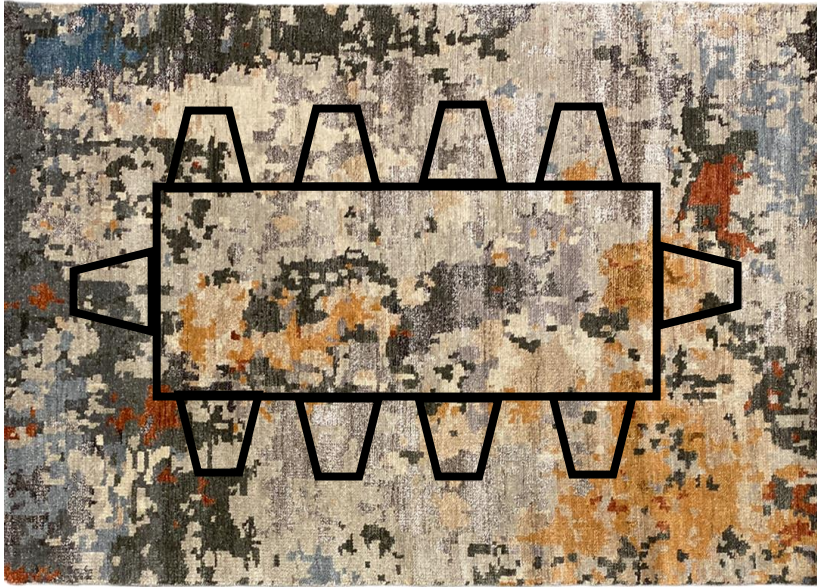


4 ft x 6 ft – 5 ft x 8 ft & Runners



Dining Room Rugs

sizes & shapes



10 ft x 14 ft – 12 ft x 15 ft

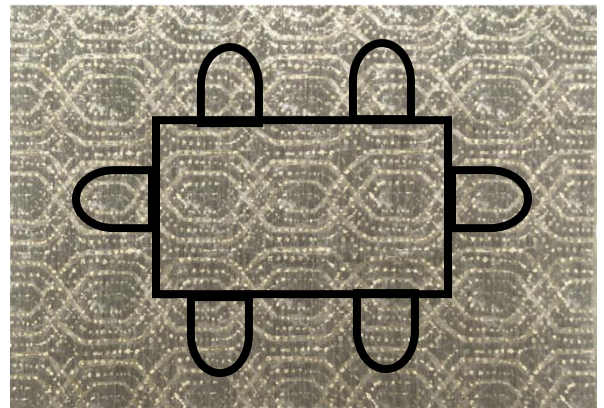


8 ft x 10 ft

Leave 18 – 24 in. of rug on all sides, allowing the chairs to be pushed back. The rug should be sized to fit the room not the table.

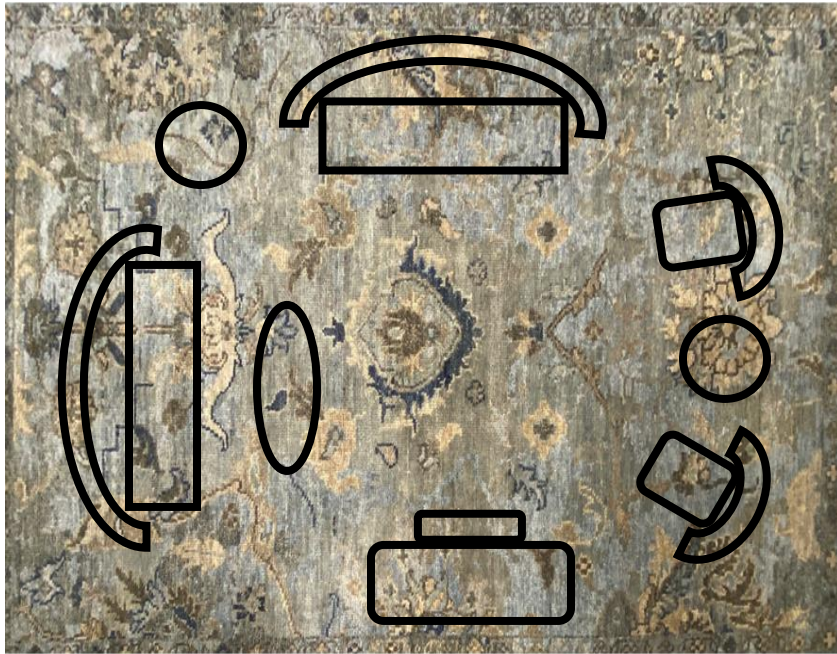


9 ft x 12 ft – 10 ft x 14 ft



8 ft x 11 ft – 9 ft x 12 ft

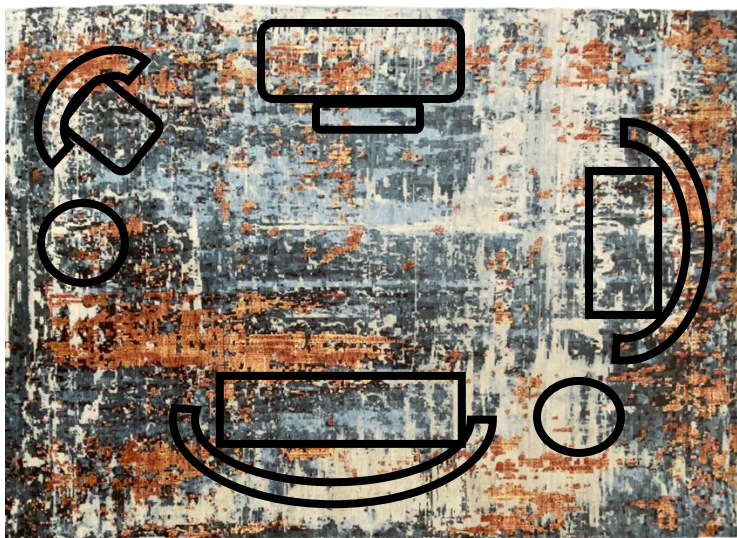
Living Room Rugs sizes & shapes



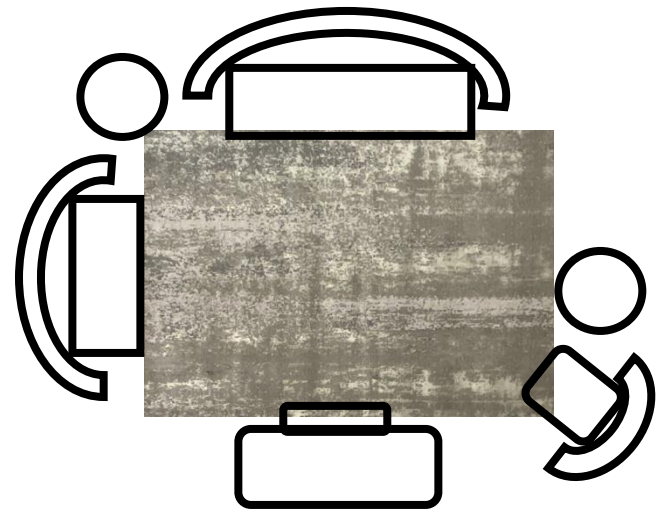
10 ft x 14 ft – 12 ft x 15 ft



8 ft x 10 ft – 9 ft x 12 ft



9 ft x 12 ft – 12 ft x 14 ft



5 ft x 8 ft – 6 ft x 9 ft